

1 Teaching

Significant investment in early career Teachers CPD around behaviour management, reading and assessment.

Intensive staff development on Metacognition linked to pupil self-efficacy, curriculum and assessment.

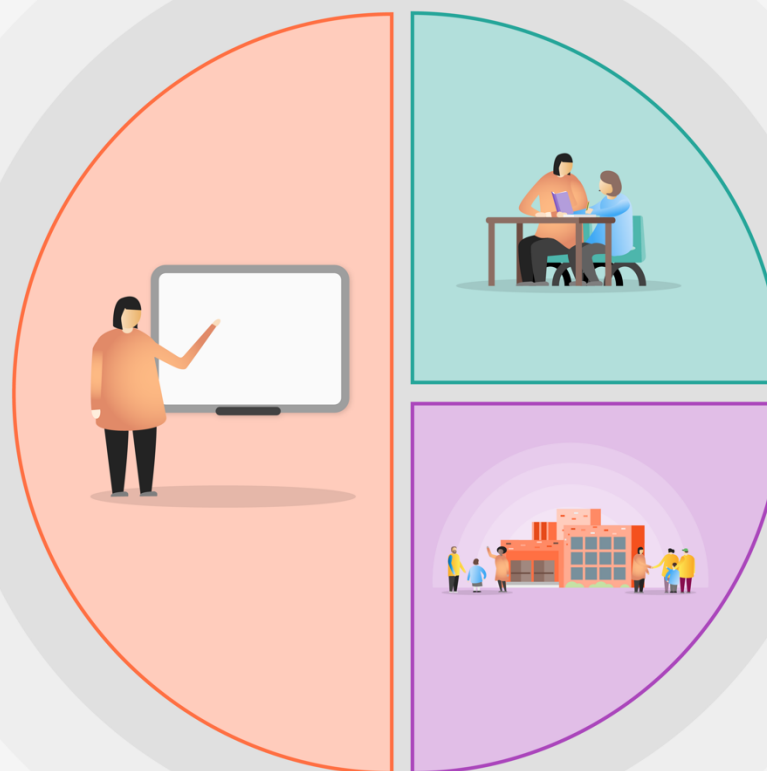
Further embed Teacher understanding on the significance of planned and intentional vocabulary development.

Develop balance of feedback so that a greater proportion happens mid-lesson to maximise impact on pupil outcomes.

Immerse pupils, staff and parents in opportunities to use Microsoft Teams so that the whole school community can confidently navigate the platform for remote learning.

Increase staff pedagogy around concrete, pictorial and abstract and ensure teaching and the maths connection model displays support this approach.

Olympic Times tables system used rigorously throughout school.



2 Targeted academic support

Targeted, small group teaching in Maths in Y2, Y5 & Y6 and in English in Y2 & Y6.

1-1 and small group speech and language intervention delivered by Elklan trained TA.

NELI intervention delivered to Reception pupils using COVID catch up initiative.

Phonics boosting for pupils not working at ARE in Y1 & Y2.

Explore the viability of employing an Academic Mentor via Teach First.

TA to provide targeted intervention to KS2 INA/EAL children

3 Wider strategies

Provision of 1-1 and small group play therapy sessions delivered to those most acutely in need.

Family Worker support for pupils and families anxious about returning to school. Attendance incentives and rewards to encourage and promote good school attendance.

Refine the admissions and assessment process for new EAL pupils.

Sports Coach and Mentor to support vulnerable children in school.